

# WE ARE HIRING



COMPETITIVE  
SALARY & BONUS



ATTRACTIVE  
BENEFITS



STAFF  
REBATES

PH & WEEKEND  
INCENTIVES  
FOR PART-TIMERS

## FULL-TIME

- 6 days work week (inc. Weekends and PH)
- Rotating shifts:
  - 7AM - 3PM
  - 3PM - 11PM
  - 10/11PM - 6/7AM (permanent night shift)

RETAIL  
ASSISTANT/  
SUPERVISOR/  
CASHIER



STOREKEEPER



## FULL-TIME

- 6 days work week (inc. Saturday)
- Fixed shift:
  - 7/8AM - 3/4PM

## FULL-TIME

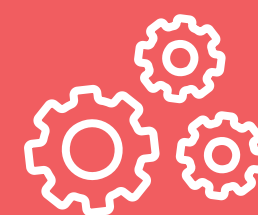
- 6 days work week (inc. Weekends and PH)
- Rotating shifts:
  - 7AM - 3PM
  - 3PM - 11PM



SKILLED  
CUTTER



RETAIL  
ASSISTANT/  
CASHIER/  
SKILLED  
CUTTER



## PART-TIME

- 6 days work week (inc. Weekends and PH)
- Rotating shifts:
  - 7AM - 12PM
  - 12PM - 5PM
  - 5PM - 10/11PM

## PLEASE REGISTER YOUR INTEREST VIA THE QR CODE

ALTERNATIVELY

Visit: <https://cutt.ly/9hNPXcc>

SMS / Whatsapp: 91122511

